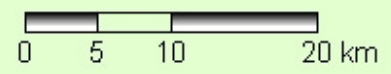
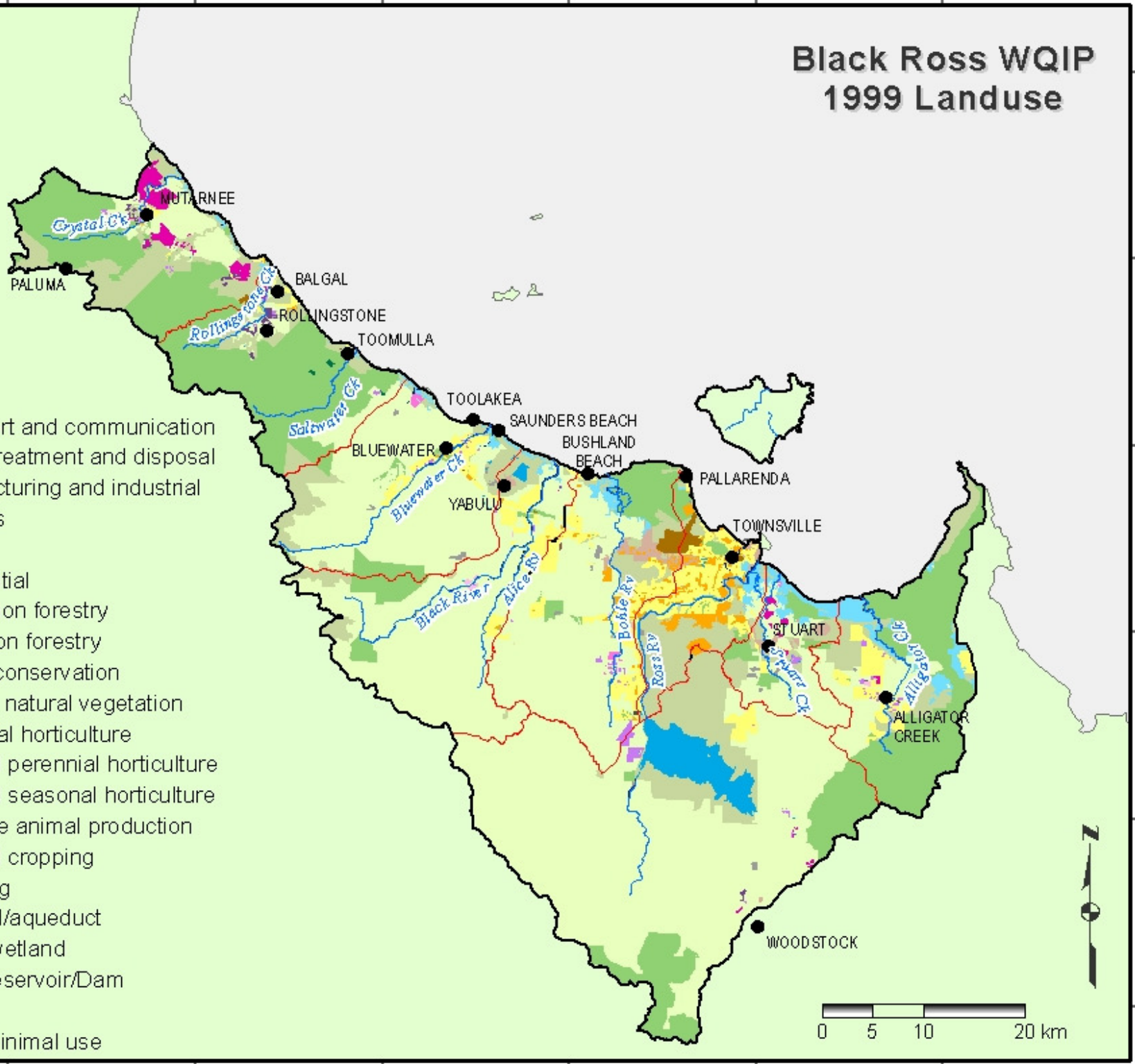


Black Ross WQIP 1999 Landuse

Landuse

- Utilities
- Transport and communication
- Waste treatment and disposal
- Manufacturing and industrial
- Services
- Mining
- Residential
- Production forestry
- Plantation forestry
- Nature conservation
- Grazing natural vegetation
- Perennial horticulture
- Irrigated perennial horticulture
- Irrigated seasonal horticulture
- Intensive animal production
- Cropping
- Channel/aqueduct
- Marsh/wetland
- Lake/Reservoir/Dam
- River
- Other minimal use



146°10'E 146°20'E 146°30'E 146°40'E 146°50'E 147°0'E

18°50'S 19°0'S 19°10'S 19°20'S 19°30'S 19°40'S